

Technical sheet :

MLT 840-145 PS+



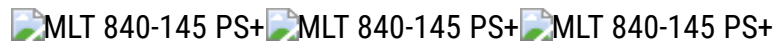
Capacities		Metric
Max. capacity	Q	4000 kg
Max. lifting height	h3	7.55 m
Max. outreach	r1	4.45 m
Reach at max. height		0.90 m
Breakout force with bucket		5500 daN
Weight and dimensions		
Unladen weight (with forks)		8410 kg
Ground clearance	m4	0.43 m
Wheelbase	y	2.88 m
Overall length to carriage (with hitch)	l11	5.37 m
Front overhang		1.47 m
Overall width	b1	2.39 m
Overall cab width	b4	1 m
Overall height	h17	2.39 m
Tilt-down angle	a5	135 °
Tilt-up angle	a4	12 °
External turning radius (over tyres)	Wa1	3.74 m
Standard tyres		Trelleborg - TH400 - 460/70 R24 159A8
Drive wheels (front / rear)		2 / 2
Steering wheels (front / rear)		2 / 2
Performances		
Lifting		6.60 s
Lowering		4.80 s
Extension		6.30 s
Retraction		5.20 s
Crowd		3 s
Dump		2.40 s
Engine		
Engine brand		John Deere
Engine nom		Stage IV / Tier 4 Final
Engine model		PWL4045
Number of cylinders - Capacity of cylinders		4 - 4500 cm³
I.C. Engine power rating / Power (kW)		141 Hp / 104 kW
Max. torque / Engine rotation		540 Nm @1600 rpm
Drawbar pull (Laden)		9300 daN
Reversible fan		Standard
Engine cooling system		4 radiators (water + intercooler + hydraulic oil + transmission oil)
Transmission		
Transmission type		Torque Converter
Gearbox		M-Shift
Number of gears (forward / reverse)		5 / 3
Max. travel speed (may vary according to applicable regulations)		40 km/h
Differential lock		Limited slip differential on front & rear axles
Parking brake		Automatic negative parking brake
Service brake		Oil-immersed multi-discs on front & rear axles
Hydraulics		
Hydraulic pump type		Load sensing pump
Hydraulic flow - Pressure		200 l/min - 270 bar
Flow sharing distributor		Standard
Tank capacities		
Hydraulic oil		156 l
Fuel tank		126 l
Diesel Exhaust fluid (AdBlue® type)		12 l
Noise and vibration		
Noise at driving position (LpA) tested following NF EN 12053 norm		74 dB(A)
Environmental noise (LWA)		105 dB(A)
Vibration to whole hand/arm		< 2.50 m/s²
Miscellaneous		
Tractor homologation		Tractor homologation
Safety cab homologation		ROPS - FOPS cab (level 2)
Controls		JSM

Options / Finishing

S : Standard / O : Optional / - : Not available

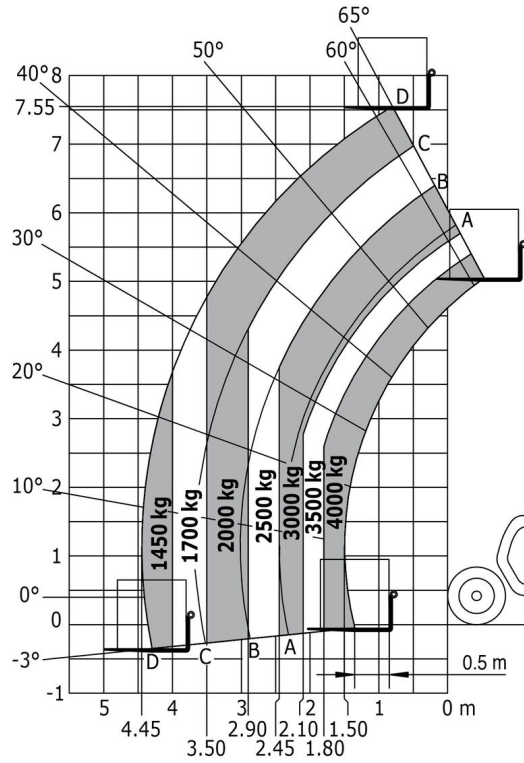
	Classic	Premium	Elite
Lifting function			
Easy Connect System (E.C.S.)	S	S	S
Electric predisposition on the top of the boom	O	O	O
Electrovalve for 2 hydraulic functions (on boom head)	O	O	O
Hydraulic attachment locking	O	O	O
Intelligent Hydraulics	O	O	S
Pre fitted electric supply to the top of the boom (on fixed part)	O	O	-
Regenerative Hydraulics	O	S	S
Return pipe to hydraulic oil tank	O	O	O
Operator station			
"Active CRC" boom suspension	O	O	S
Air conditioning with manual adjustment	O	S	S
Air suspension cloth-covered seat (GRAMMER)	O	S	-
Automatic wheel alignment	O	O	S
Bluetooth USB car radio with extra microphone (100 W)	O	O	S
Bluetooth USB car radio with integrated microphone (100 W)	O	S	-
CD MP3 car radio	S	-	-
Electric mirror with de-icing	O	O	S
Hand throttle with engine memo	O	O	S
Joystick Switch and Move (JSM) on floating & adjustable armrest	S	S	-
Lateral wiper	S	S	S
Low frequency air suspension cloth-covered seat (GRAMMER)	O	O	S
Low frequency pneumatic cloth seat with heating (KAB)	O	-	-
Mechanical cloth-covered seat (GRAMMER)	S	-	-
Roof wiper	S	S	S
Safeview Camera Pack (X2)	O	O	-
Tuner car radio (50 W)	S	-	-
Motorization/Power			
Attachment hydraulic line	S	S	-
Auto reversing fan	S	S	S
Auto Reversing Fan	S	-	-
Continuous flow hydraulics	O	O	S
Ecostop	O	O	-
Secondary functions			
1 pair of pre-fitted Double Action rear hydraulic couplers	O	O	O
Automatic rotating towing hitch on counterweight	O	O	O
Hydraulic pick-up hitch	-	O	-
Hydraulic trailer brake	O	O	O
Ladder hitch with choice of hooks	O	O	-
Manual rotating towing hitch	S	S	S
Lighting			
Front and rear LED work lights on cab (x4 : 2 front + 2 rear)	-	S	S
Front and rear work lights on cab (x4: 2 front + 2 rear)	S	-	-
LED + (4 additional work lights)	O	O	S
Ied front road lights	O	O	-
Rear electric plug	S	S	-
Safety			
Audio warning on reverse	O	O	O
Centralized greasing points	S	S	-
Rear windscreen defrost	S	S	S
Windshield protection grid	O	-	-

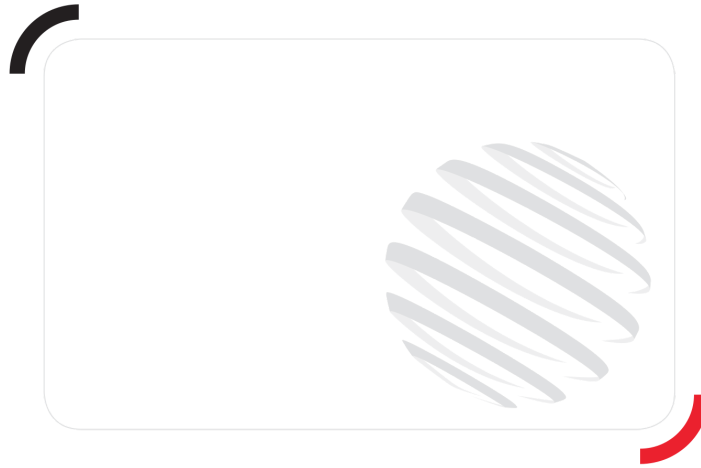
MLT 840-145 PS+ - Dimensional drawing



MLT 840-145 PS+ - Load chart

Rough terrain load chart (EN 1459 B) Metric





Siège Social

430 rue de l'Aubinière - 44150 Ancenis Cedex - France

Tel: +33(0)2 40 09 10 11 - Fax: +33 (0)2 40 09 10 97

www.manitou.com



This brochure describes versions and configuration options for Manitou products which may be fitted with different equipment. The equipment described in this brochure may be standard, optional or not available depending on version. Manitou reserves the right to change the specifications shown and described at any time and without prior warning. The manufacturer is not liable for the specifications given. For more information, contact your Manitou dealer. Non-contractual document. Product descriptions may differ from actual products. List of specifications is not comprehensive. The logos and visual identity of the company are the property of Manitou and may not be used without authorisation. All rights reserved. The photos and diagrams contained in this brochure are provided for information only.

MANITOU BF SA - Limited company with board of directors - Share capital: 39,668,399 euros - 857 802 508 RCS Nantes